

Fuse disconnecter EFD 10

INSTALLATION INSTRUCTION

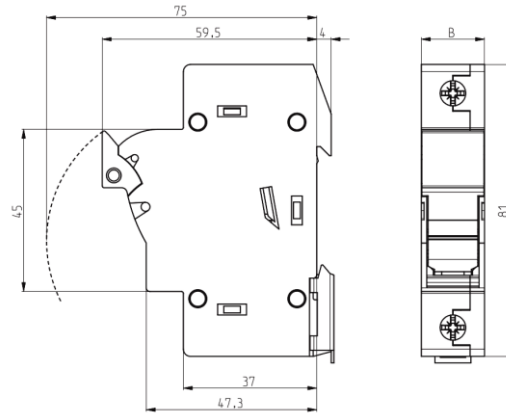
LV-fuse-switch disconnecter

Dimensions [mm]

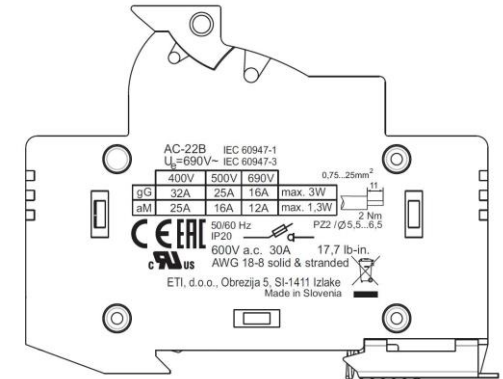
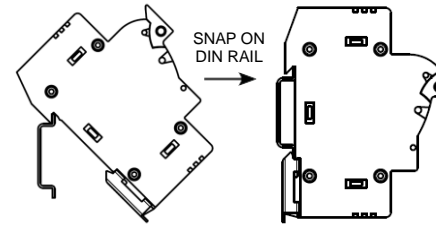
Installation



CAUTION!
Installation by electricians only!

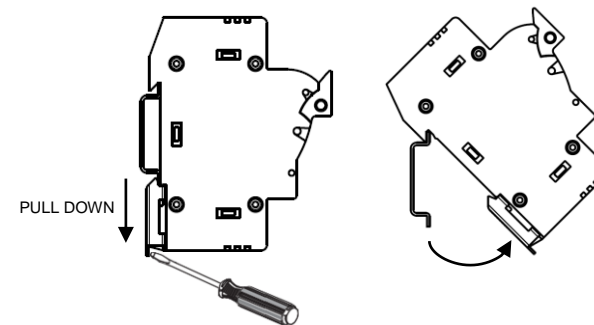
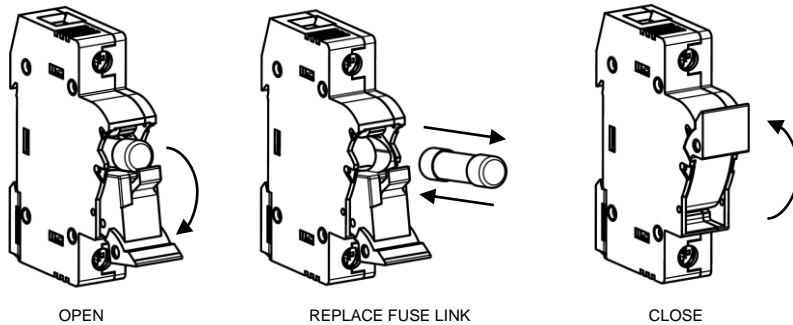


TYPE	1p	1p+N	2p	3p	3p+N
B [mm]	17,5	35	35	52,5	70



Fuse link replace

Disassembly

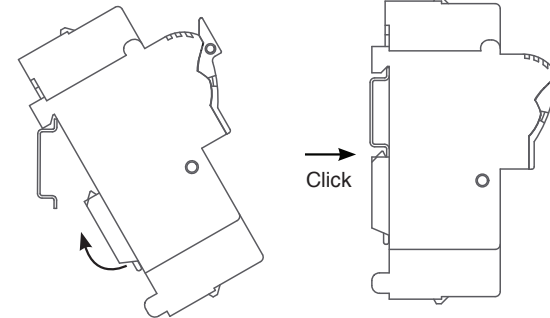
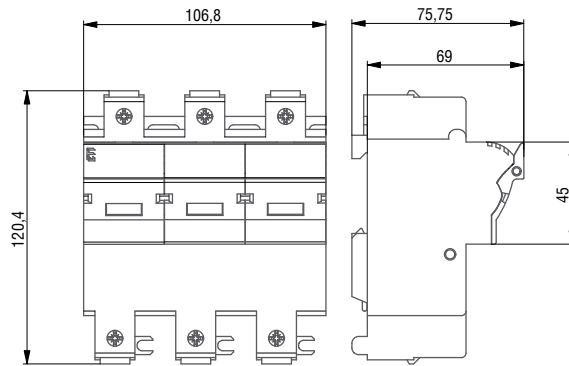
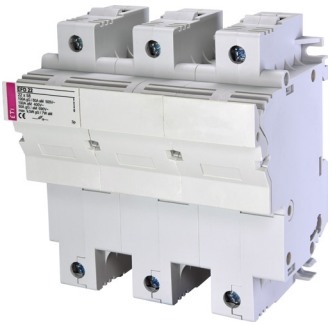


Fuse holder EFD 22 3p

LV-fuse-switch disconnecter

Dimensions [mm]

Installation



AC-21B IEC 60947-1
U_e=690V~ IEC 60947-3

400V	500V	690V	
gG	100A	50A	max. 9,5W
aM	100A(50kA)	80A	50A max. 7 W

50/60 Hz
IP20

600V a.c./d.c. 100A 26,6 lb-in.
c US AWG 12-2 solid & stranded
Do not operate under load for DC voltage
Made in Slovenia

4...50mm²
20
2,5 - 3Nm
PZ2 / Ø 5,5...6,5

CAUTION!
Installation by electricians only!

Fuse replace

Disassembly

