

The logo for Krube, featuring the word "krube" in a bold, lowercase, sans-serif font. The letter "k" is black with a small orange dot above it. The letter "e" is black with a small orange dot above it. The logo is enclosed in a white circle with a blue border.

**krube**

# SPECIFICATION

---

**MODEL**

**K-AC170-A230-56**

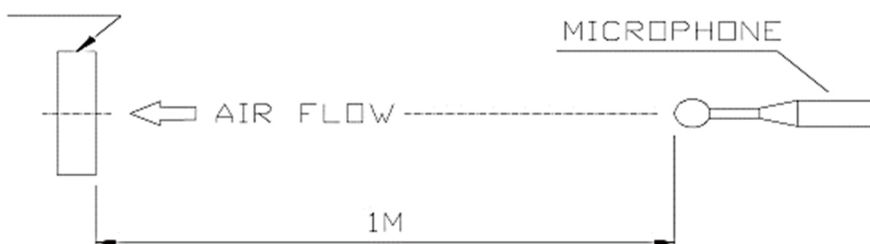
## SPECIFICATIONS

Model	K- AC170-A230-56
VOLTAGE RANGE	AC 196 to 264 V (50/60Hz)
RATED VOLTAGE	AC 230V (50/60Hz)
SPEED(RPM)	5650 RPM $\pm$ 10%
RATED CURRENT	2.38 A $\pm$ 15%
RATED INPUT	320 W $\pm$ 15%
LOCKED CURRENT	0.34 A $\pm$ 15%
MAX. AIR VOLUME	375 $\pm$ 10% CFM
MAX. STATIC PRESSURE	12.2 $\pm$ 10% inH2O
OPERATING TEMP	-25 C ~ +55 C
MAX. OPERATING HUMIDITY	85%
STORAGE TEMP	-40 C ~ + 80 C (Non-condensing)
ROTATING DIRECTION	CLOCKWISE, see on rotor
BLOWING DIRECTION	EXHAUST OUT OF THE OUTLET
INSULATION RESISTANCE	DC 500 V 10M $\Omega$
NOISE	82 (Max.87)dB
SAFETY PROTECTION	ELECTRONICALLY-PROTECTED
INSULATION GRADE	CLASS A
BEARING	BALL BEARING
LIFE EXPECTANCY	60000 HOURS (40 C)
FRAME MATERIAL	Die-cast aluminium
IMPELLER	Aluminium sheet
DIMENSION	170 mm
WEIGHT	4.7KG

### NOTES:

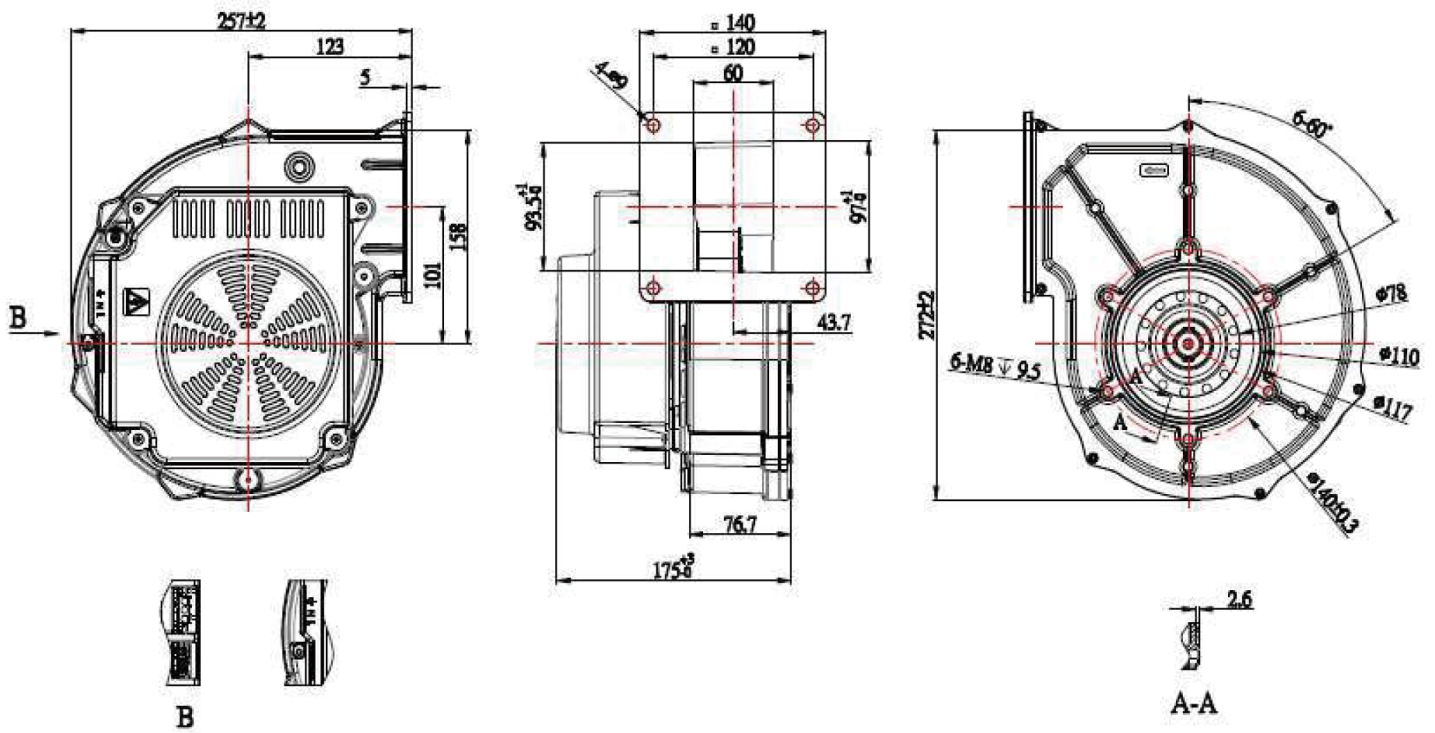
1. ALL READINGS ARE MEASURED AFTER STABLY WARMING UP THROUGH 30 MINUTES.
2. STANDARD AIR PROPERTY IS AIR AT (Td) 25° C TEMPERATURE, (RH) 65% RELATIVE HUMIDITY, AND (Pb) 760 mmHg BAROMETRIC PRESSURE.
3. ACOUSTICAL NOISE MEASURING CONDITION:

#### BLOWER FAN



4. NOISE IS MEASURED AT RATED VOLTAGE IN FREE AIR IN A SEMI ANECHOIC CHAMBER WITH A & D SOUND LEVEL METER WITH MICROPHONE AT A DISTANCE OF ONE METER FROM THE FAN INTAKE.

## PRODUCT DRAWING



## AIR FLOW-STATIC PRESSURE CURVE

Product name: Fan

