

Condensing Boiler EC Fan

EC Radial Blowers

K-AC170-B415W

PRODUCTION DESCRIPTION

Material: Aluminum Housing

Impeller: aluminum alloy plate

Motor protective cover: plastic

Bearings: Maintenance-free ball bearings

Power Connector: Compliant with RAST6.35,
3-pin male butt connector

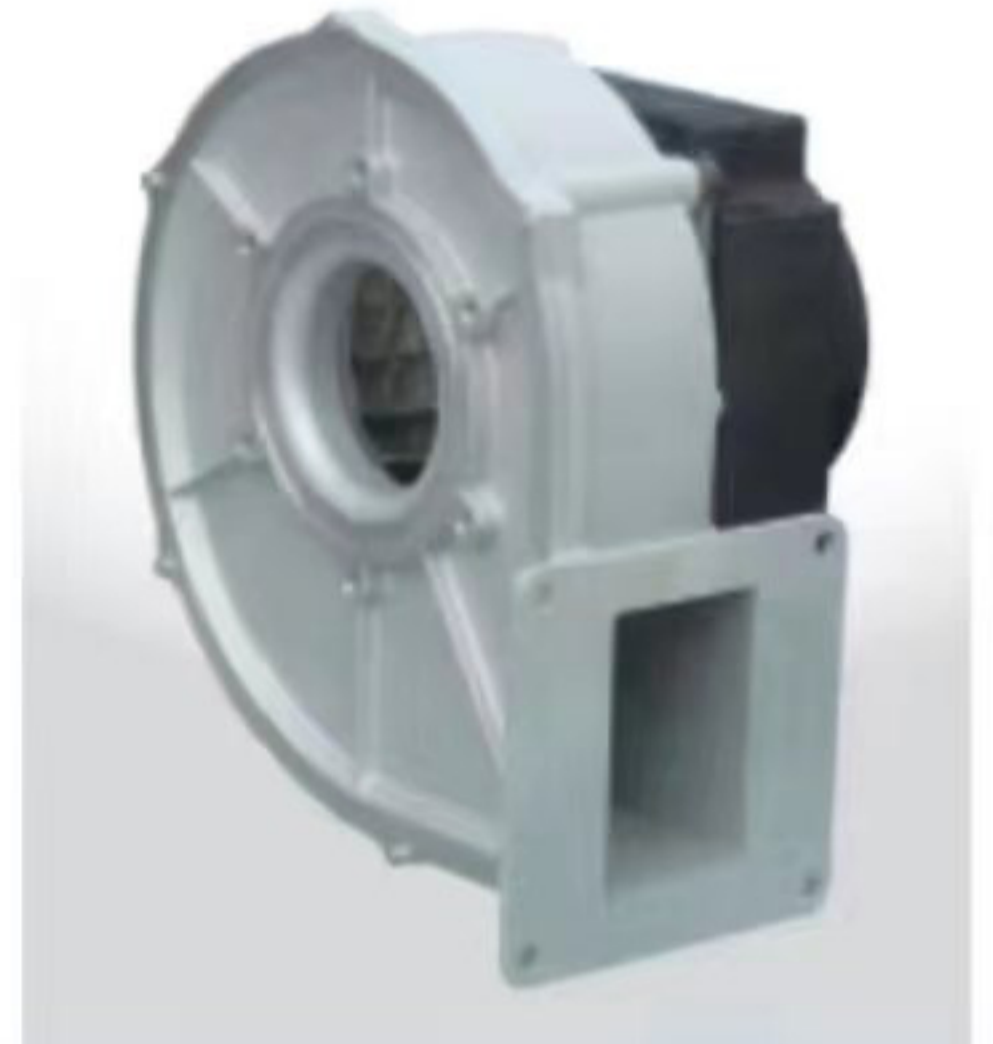
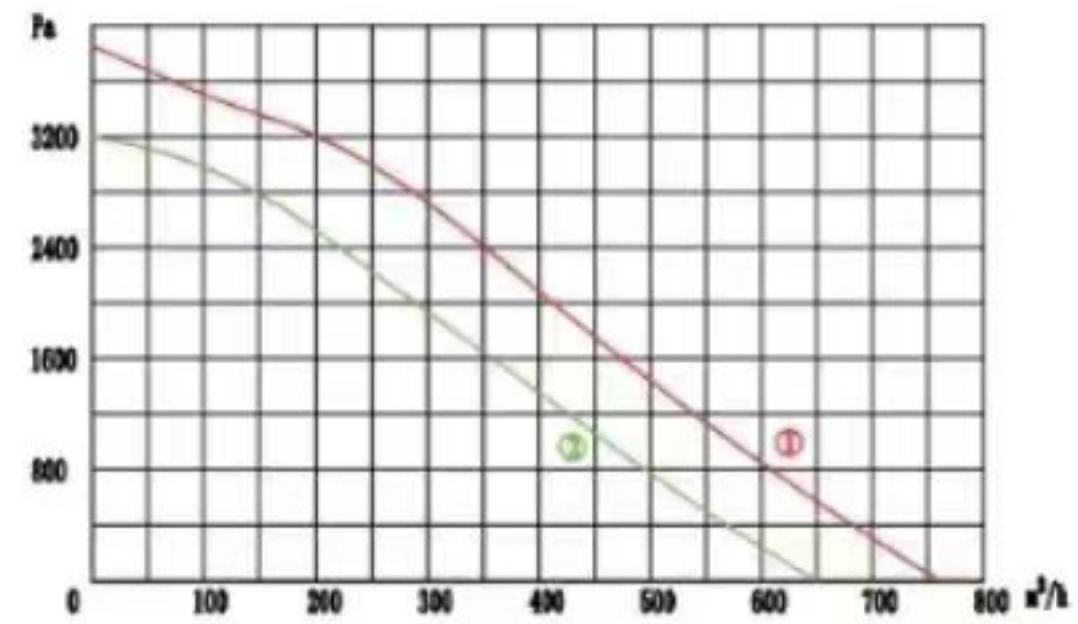
Control connector: RAST4.2 compliant,
5-pin male butt connector

Control mode: PWM/0-10V

Speed output: 3 pulses per revolution

Installation method: horizontal, vertical

Air volume curve



Technical Data

Model	Rated voltage (V)	Frequency (HZ)	Air Flow (m3/h)	Max static pressure (pa)	Input Power (W)	Max Speed (r/min)	Applicable ambient temperature	Curve
K-AC170-B415W	230	50/60	760	3800	415	8000	-40 ~ 60°C	①
K-AC170-B315W	230	50/60	650	3200	315	8000	-40 ~ 60°C	②

Installation size

